

GOLD STANDARD FOR THE GLOBAL GOALS

LAND USE & FORESTS ACTIVITY REQUIREMENTS

Version 1.2

Published October 2019

GOLD STANDARD FOUNDATION VISION & MISSION

OUR VISION: Climate security and sustainable development for all.

OUR MISSION: To catalyse more ambitious climate action to achieve the Global Goals through robust standards and verified impacts.

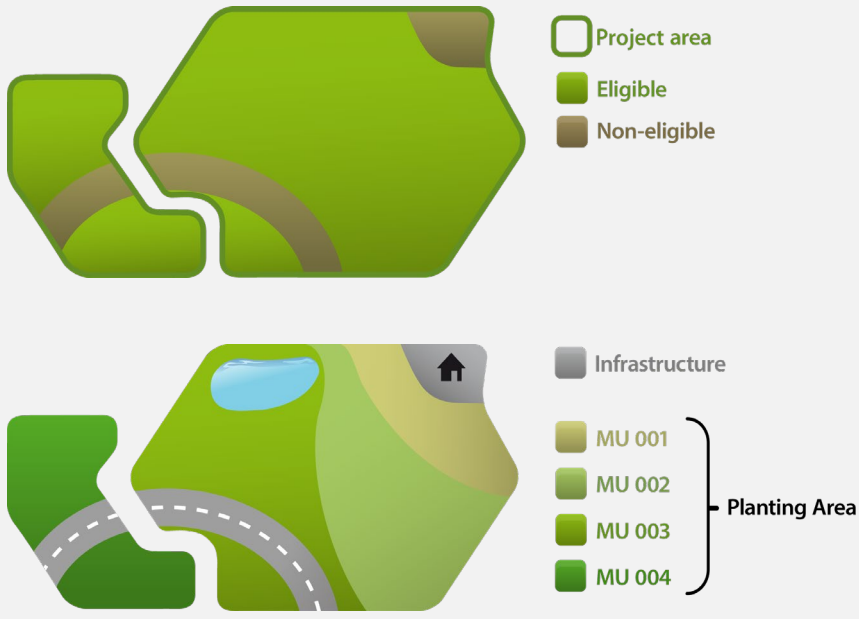
Status of Document:	Version 1.2 – Effective 24 th October 2019
Language:	English
Contact Details:	help@goldstandard.org www.goldstandard.org
Next planned update:	24 th April 2021

TABLE OF CONTENTS

TERMS AND DEFINITIONS	3
1. SCOPE AND APPLICABILITY	8
GENERAL.....	8
2. ELIGIBILITY CRITERIA.....	8
(A) FSC DUAL CERTIFICATION	9
(B) SECURED TITLES.....	10
3. ELIGIBILITY PRINCIPLES & REQUIREMENTS	13
PRINCIPLE 1 – CONTRIBUTION TO CLIMATE SECURITY & SUSTAINABLE DEVELOPMENT	13
PRINCIPLE 2 – SAFEGUARDING PRINCIPLES & REQUIREMENTS	14
PRINCIPLE 3 – STAKEHOLDER INCLUSIVITY	15
PRINCIPLE 4 – DEMONSTRATION OF REAL OUTCOMES	15
PRINCIPLE 5 – FINANCIAL ADDITIONALITY & ONGOING FINANCIAL NEED ...	16
4. TECHNICAL REQUIREMENTS.....	19
ANNEX A – UNCERTAINTY OF LUF PARAMETERS.....	22
ANNEX B – REQUIREMENTS FOR A/R SMALLHOLDER & MICROSCALE PROJECTS	27
ANNEX C – GUIDELINES TO CONDUCT A SPATIAL FOREST/NON-FOREST ASSESSMENT.....	33
ANNEX D – LUF INPUT & GRIEVANCE MECHANISM	36

TERMS AND DEFINITIONS

Terms	Definitions
Agriculture	The Gold Standard defines agriculture in accordance with the FAO, as agricultural activities that contribute to the achievement of sustainable development goals: www.fao.org/climate-change/en
Crop	A crop is a plant or fungus species that is purposefully cultivated and/or harvested to satisfy human and livestock needs.
Forest	<p>A forest is defined by the Designated National Authority (DNA) of the project's host country</p> <p>http://cdm.unfccc.int/DNA/index.html.</p> <p>In case no forest definition is yet given by the DNA, the Project Developer can refer to the forest definition of the FAO: http://www.fao.org/docrep/003/x6896e/x6896e0e.html or the national forest definition of the project's host country.</p>
Invasive Species	<p>An organism introduced by man into places out of its natural range of distribution, where it becomes established and disperses, generating a negative impact on the local ecosystems and species. An invasive species is likely to cause economic harm or harm to human health.</p> <p>Note that species which are already locally established and of economic importance are excluded under this definition.</p> <p>Source: Adapted from IUCN, available at https://www.iucn.org/theme/species/our-work/invasive-species</p>
Livestock	<p>Livestock comprises all domestic animals. Non-domestic animals are not included unless they are kept or raised in captivity on agricultural holdings, including holdings without land.</p> <p>Source: FAO, available at http://www.fao.org/waicent/faoinfo/economic/faodef/fdef16e.htm</p>
Modelling Units (MU)	Modelling Units are distinct parts of the eligible area where carbon stocks can be quantified based on a Gold Standard-approved SDG Impact Quantification Methodology. To meet the precision level for the carbon stocks estimation (see Annex A-Uncertainty of LUF Parameters). MU areas normally have homogeneous characteristics to quantify a certain SDG Impact (growth patterns, management treatment and start date).
New Area	New areas are project areas that are added to a project after it achieves Design Certification
People Affected	People affected are individuals or an entity that are, or are likely to be, subject to the project activities.

	<p>Examples of people affected are local:</p> <ul style="list-style-type: none"> (a) Communities, indigenous peoples, neighbors, processors, and local businesses, AND (b) Organizations authorized or known to act on behalf of people affected (e.g., NGOs, labour organizations). <p>Source: Adapted from FSC where the term is 'affected stakeholder'</p>
Planting Area (A/R specific)	<p>The planting area is the eligible area of A/R projects where tree planting activities take place.</p> <p>The planting area is the part of the project area which meets the applicability conditions of the applied Gold Standard Methodology.</p> <p>Non-eligible areas are those which do not meet the applicability conditions of the applied Gold Standard Methodology.</p>
Project Area	<p>As per Gold Standard for the Global Goals Glossary, with further definition as follows:</p> <ol style="list-style-type: none"> The project area is a spatial area or areas submitted for certification with clearly defined boundaries managed to a set of explicit long-term management objectives. Source: Adapted from FSC, where the relevant term is 'Management Unit' <p>The project area is the sum of all eligible and non-eligible areas as per Figure 1.</p> <p>Figure 1: Project area, planting area, and MUs</p>  <p>2. Boundaries of the project area shall be clearly distinguishable in the field.</p>

3. Under the Gold Standard the project area is divided in Modelling Units (MU) for an efficient calculation of the amount of Certified SDG Impact Statement or Product (for example GSVERs).

The 'project area' as the area of certification shall be limited to eligible areas, any riparian or other buffer zones located within eligible areas, and areas set aside for conservation in accordance with Gold Standard LUF requirements.

Project Types

A grouped project encompasses several single area projects but applies the 'Land Use & Forests Requirements' in the same way as a single area project. Figure 2, illustrates a grouped project and Figure 3, a single area project. Grouped projects are similar to a Programme of Activities (PoA) under the Clean Development Mechanism (CDM), allowing for an unlimited number of new project areas to be added without undergoing the complete Gold Standard certification process.

The project developer can add new areas to a project (grouped projects) or expand an existing project area (single area projects) at any time after a project reaches Registered status.

Figure 2: Grouped Project

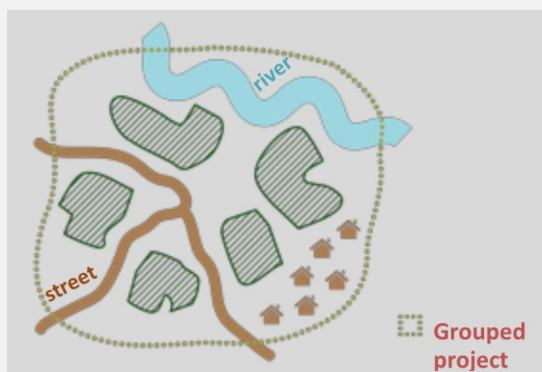
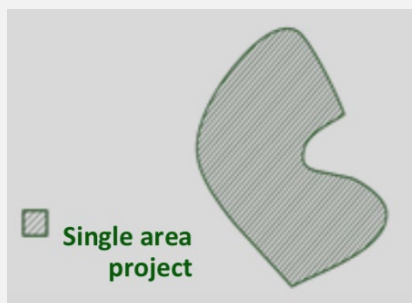


Figure 3: Single Area Project



Project Participant

A project participant is an individual or entity that is contributing to the generation of the SDG certified impacts.

Project Region	<p>The project region is the spatial area where people and environment are influenced by the project activities. A project region can be expanded over time.</p> <p>All project areas are located within the project region.</p> <p>The 'project region' must be identified in the Project Design Document (PDD) and may indicate areas of future project growth through new area certifications.</p>
Project start	<ol style="list-style-type: none"> i. A/R specific: The project start date shall be the earliest date when the first trees are planted. ii. AGR specific: The project start shall be the earliest date when implementation of the project activities that lead to the certification of Ecosystem Services and SDG Impacts starts. For example, for a project that involves shift in agricultural practice the start date is the date when the first project participant shifted to the improved agricultural practice.
SDG Impacts & Ecosystem Services	<p>Ecosystem services are benefits people obtain from ecosystems. Examples include SDG Impacts such as:</p> <ol style="list-style-type: none"> i. Carbon sequestration and greenhouse gas reduction (SDG 13), AND ii. Water supply and purification (SDG 6), AND iii. Biodiversity conservation and enhancement (SDG 15)
Smallholder	<p>Smallholders are farmers that have more than 50% of farm work done by family members, cooperative members or neighbours.</p>
Tree	<ol style="list-style-type: none"> (a) A tree is a perennial woody plant with one or several dominant sprouts that increase its circumference due to secondary growth. (b) For a practical use of this document the definition of a tree also includes shrubs, palms and bamboo plants. (c) In any project, trees shall reach a minimum height of 2 meters. <p>A/R specific: For forest inventories of different types of trees additional guidance is provided by the forest inventory guidelines of the BioCarbon Fund¹.</p>
Tree Planting (A/R specific)	<p>Tree planting refers to the activity of putting trees in the ground for growth; it also includes sowing or assisted natural regeneration.</p>

¹ Available at
<http://katoombagroup.org/~katoomba/documents/tools/Pearson%20et%20al%20-%20Sourcebook%20for%20LULUCF.pdf>

Wetlands	<p>Wetlands are lands that are transitional between terrestrial and aquatic systems where the water table is usually at or near the surface or the land is covered by shallow water, and that have one or more of the following attributes:</p> <p>Source: Cowardin et al. 1979 - Classification of Wetlands and Deepwater Habitats of the United States</p> <ul style="list-style-type: none"> (a) At least periodically, the land supports predominantly plants typically occurring in wetlands, AND (b) The substrate is predominantly undrained and water saturated soil, AND (c) The substrate is non-soil and is saturated with water or covered by shallow water at some time during the growing season of each year.
Workers	<p>Workers are all persons that are employed by a written or verbal agreement. This includes permanent, migrant, part-time and seasonal employees of all ranks and categories, including field workers, artisans, labourers, administrators, supervisors, executives, contractor employees as well as self-employed contractors and sub-contractors.</p> <p>AGR specific: Excepted from the definition above are:</p> <ul style="list-style-type: none"> (a) Workers employed by a verbal agreement on smallholder farms for less than 3 months per year, AND (b) Smallholder farmers themselves, AND (c) Family members of the smallholder farmer

1. SCOPE AND APPLICABILITY

- 1.1.1 This Requirements document, hereafter "the LUF Requirements", functions as part of a pathway to certification within Gold Standard for the Global Goals. The Requirements enable eligible forestry and agriculture activities to undergo Design and Performance Certification, including issuance of Certified SDG Impact Statements and Products.
- 1.1.2 This document presents the Requirements that Gold Standard Land Use & Forest Projects, including Afforestation/Reforestation (A/R) and/or Agriculture (AGR) shall apply in conjunction with the [Principles & Requirements](#) and those referenced or associated. Through conformity to these two documents and relevant Methodologies and Product Requirements such as [GHG Emissions Reduction & Sequestration Product Requirements](#), a Project may be issued with Gold Standard Verified Emissions Reductions (GS VERs) and other products. New methodologies and certification products involving Land Use & Forest projects may be submitted to Gold Standard for approval as per the [Principles & Requirements](#).
- 1.1.3 In this document The 'Land Use & Forests Requirements' include sections or items within sections that apply only to A/R or to AGR projects. The sections/items marked as "**A/R specific**" apply only to A/R projects and "**AGR specific**" apply only to AGR projects. Sections/items without any specific labelling apply to both A/R and AGR projects.

2. GENERAL ELIGIBILITY CRITERIA

- 2.1.1 In addition to the requirements stipulated in the [Principles & Requirements](#), A/R and AGR projects shall comply with the following principles and criteria:
- (a) Eligible project types are Afforestation & Reforestation Projects (A/R) and Agriculture Projects (AGR).
 - (b) No Deforestation: The eligible area shall not meet the definition of forest 10 years before project start date and at project start date.
 - (c) In the case when the eligible area has been deforested during the last 10 years prior to project start date, the eligibility of the project shall be determined by Gold Standard as part of the Preliminary Review. The Project Developer shall provide evidence that the deforestation activity has not taken place with an intention to implement project activities that generate Gold Standard Certified SDG Impact Statements and/or Products, such as GSVERs.
 - (d) Projects can be implemented in any country. If projects are located in a country or state that has an operational mandatory national or pan-national cap-and-trade scheme to reduce

greenhouse-gas (GHG) emissions, and hereby accounts for its own land-based activities under its national or subnational accounting, then projects seeking GSVERs shall conform to the [GHG Emissions Reduction and Sequestration Product Requirements](#) - Annex A Double Counting Requirements.

2.1.2 **A/R** projects:

- (a) Can include planting trees
- (b) Can include single-species plantations
- (c) Can apply all silvicultural systems. For example:
 - i. Conservation forests (no use of timber)
 - ii. Forests with selective harvesting
 - iii. Rotation forestry
- (d) All projects can include agriculture (agroforestry) or pasture (silvopasture) activities.

2.1.3 **AGR projects** include eligible project activities that are covered by an approved [Gold Standard SDG Impact](#) Quantification methodology.

(a) [FSC Dual Certification](#)

- 2.1.4 The Gold Standard and Forest Stewardship Council (FSC) are in partnership to promote environmentally appropriate, socially beneficial and economically viable management of the world's forests. Gold Standard and FSC therefore offers opportunities for dual certification in a parallel process. Projects seeking dual certification will need to comply with all the FSC requirements.
- 2.1.5 With respect to dual certification Gold Standard recognises that FSC certification can be used to demonstrate conformity with the [Safeguarding Principles Assessment](#) and Annual Reporting Requirements. In such cases, the Gold Standard Validation/Verification Body (GS-VVB) is not required to re-check the FSC documentation.
- 2.1.6 In the event of a grievance being raised against a Gold Standard Project then all Gold Standard Requirements shall apply for the purpose of assessing Non-conformity and any response/redress.
- 2.1.7 The Project shall demonstrate conformity to [Safeguarding Principle 8 - Water](#). FSC Certification is not deemed as evidence that this Principle is met.
- 2.1.8 When applying a dual certification, the Project Developer shall provide the 'FSC Audit Report' alongside the Project Design Document (PDD) - the PDD may reference the FSC Audit Report for relevant sections but is not required to duplicate. Project Developers shall also provide the 'FSC Annual Surveillance Report' instead of the template for the 'Annual

Report'. For dual certification, FSC certification is required to be valid throughout the crediting period.

(b) Secured Titles

2.1.9 **A/R specific:** For all project participants, the following information and evidence shall be provided:

- (a) Name and contact details
- (b) Each entity's legal registration number and documentation by the governing jurisdiction that proves that the entity is in good standing. AND
- (c) For the duration of the crediting period the Project Developer shall:
 - i. where a Gold Standard Certified Statement or Product (e.g. GSVERs) is sought, Project Developers must own the CO₂ user rights² or carbon sequestration rights for the project area, AND
 - ii. hold an uncontested legal land title for the Project Area, AND
 - iii. own the rights for timber and non-timber forest products for the project area, AND
 - iv. hold all necessary permits to implement the project (planting permits, infrastructure permits, harvesting permits, etc.), AND
 - v. participate in the financing of the project.

2.1.10 If the Project Developer does not meet all of the above requirements, the persons or legal entities that do meet those respective requirements shall endorse the proposed project through an agreement that aligns with the duration of the crediting period.

2.1.11 The Project Developer shall inform the authorities of all project participants with respect of

- (a) instructing the Gold Standard, AND
- (b) requesting or communicating the addition or edits of project participants, AND

² CO₂ user rights are rights that grant the titleholder any benefit that could be generated from the certification of the carbon sequestration or greenhouse gas reduction by the project.

For land use projects, the holder of the CO₂ user rights is usually the owner of the land, where the project activity takes place – except when such rights have been expressly transmitted to another person or entity by the land owner, or when an authority act / decision / order / regulation assigns such rights to a different person than the land owner.

- (c) receiving all information from the Gold Standard Secretariat on matters related to the project.

2.1.12 **AGR specific:** Depending on the structure of the project, the Project Developer shall follow either requirement 1 or 2.

2.1.13 Requirement 1: The Project Developer acts on behalf of project participants. For such cases, each project participant shall sign an *agreement* with the Project Developer, which confirms that:

- (a) The project participant holds the CO₂ user rights³ that are associated with the project activities and has passed these on to the Project Developer, AND
- (b) The project participant holds all necessary rights to implement the project activities (e.g., rights to harvest), AND
- (c) The legal land title or similar entitlement⁴ for the land on which the project activities are implemented is uncontested.

These agreements shall include the:

- (a) Contact details of the project participants, AND
- (b) The legal registration number and documentation by the governing jurisdiction that proves that the entity is in good standing (in case of an organisation), AND
- (c) Contact details of the land owner (if differing), AND
- (d) Length of lease contract (if applicable), AND
- (e) The liabilities and benefits for the person or entity to implement the project activities (e.g., switch to another ^[1]_{SEP} crop and get access to the seeds).

³ CO₂ user rights are rights that grant the titleholder any benefit that could be generated from the certification of the carbon sequestration or greenhouse gas reduction by the project.

For land use projects, the holder of the CO₂ user rights is usually the owner of the land, where the project activity takes place – except when such rights have been expressly transmitted to another person or entity by the land owner, or when an authority act / decision / order / regulation assigns such rights to a different person than the land owner.

⁴ Similar Entitlement: It is considered that similar entitlement exists, when 1) A person or entity has been using the land of the project as its owner, for the period of time that the applicable law requires for persons or entity to acquire property by its use, AND 2) Neighbours or neighbouring community agrees that the land has been used for such time by the person or entity claiming it.

2.1.14 Requirement 2: The Project Developer acts on its own. In such cases, the Project Developer shall provide evidence that:

- (a) It holds the CO₂ user rights⁵ and the rights for any other Certified SDG Impact Statement or Product that are associated with the project activities, AND
- (b) It holds all necessary rights to implement the project activities (e.g., rights to harvest), AND
- (c) The legal land title or similar entitlement for the land on which the project activities are implemented is uncontested.

(c) New Area Certification

2.1.15 New Areas can be added or removed to an existing project area anytime after a project reaches Registered status (after successfully completing Design Certification) by paying the applicable review [fee](#).

2.1.16 A project developer shall consult with Gold Standard before removing a certified area and/or reducing the size of a certified area, in order to assess the materiality of the changes.

2.1.17 To add new areas to a project the following requirements are set:

- (a) The inclusion of new areas shall follow the Project Design Certification process as per [Principles and Requirements](#).
- (b) The Project Developer should assess if the new areas present material differences from the Design Certified project and update the [Safeguarding Principles & Requirements](#) accordingly. Materiality must be assessed according to [Principles and Requirements](#).
- (c) For new areas proposed for inclusion, the crediting period end date will be the same as for the previously Design Certified project activity.
- (d) The registered Monitoring & Reporting Plan template shall be updated with the information for new areas as needed.

⁵ CO₂ user rights are rights that grant the titleholder any benefit that could be generated from the certification of the carbon sequestration or greenhouse gas reduction by the project.

For land use projects, the holder of the CO₂ user rights is usually the owner of the land, where the project activity takes place – except when such rights have been expressly transmitted to another person or entity by the land owner, or when an authority act / decision / order / regulation assigns such rights to a different person than the land owner.

- (e) A site visit and an opinion by a VVB is required to confirm the eligibility of the proposed activities in the new areas.
 - (f) New Areas inclusion can be certified before or during a performance certification but it is always required to have the opinion of a VVB based on a site visit to the new area/s being certified.
- 2.1.18 New areas added to retroactive projects must follow the requirements for retroactive issuance as per the [Principles and Requirements](#), [GHG Emissions Reductions & Sequestration Product Requirements](#), and the Requirements stated in this document.

3. ELIGIBILITY PRINCIPLES & REQUIREMENTS

- 3.1.1 This section describes the additional requirements and/or deviations from the [Principles & Requirements](#). The LUF project seeking Gold Standard certification shall meet these additional requirements.
- 3.1.2 The Certification cycle for LUF Projects is as detailed in [Principles & Requirements](#). Projects successfully completing Performance Certification shall be issued with Certified Impact Statement and/ or Product as per the Gold Standard [Claims Guidelines](#).

PRINCIPLE 1 – CONTRIBUTION TO CLIMATE SECURITY & SUSTAINABLE DEVELOPMENT

- 3.1.3 **AGR specific:** Increasing resilience to be able to deal with impacts of climate change is crucial for achieving income stability, food security and long-term development. Hence, preserving and increasing adaptive capacity for project participants must be an integral element of every project. Specifically:
- (a) The Project Developer shall identify the current and predicted variability in climate/weather for the project region.
 - (b) Based on the current and predicted variability in climate/weather, the Project Developer shall analyse the possible effects on the project within the crediting period.
 - (c) The Project Developer shall implement adaptation activities appropriate to the context and need of the respective project. Adaptation activities may include:
 - i. Practices that increase the resilience of farming systems, OR
 - ii. Measures to improve the efficiency of water use, OR
 - iii. Crops (crop breeds) with improved characteristics, OR
 - iv. Crop rotation schemes, OR

- v. Sharing of existing farmers' knowledge as well as knowledge on new agriculture practices, OR
- vi. Diversification of livelihoods, e.g., through increased agricultural productivity, increased variety of cultivated crops, identification of other income streams, OR
- vii. Measures to improve soil fertility.

PRINCIPLE 2 – SAFEGUARDING PRINCIPLES & REQUIREMENTS

- 3.1.4 The Project Developer shall conduct the Safeguarding Principles assessment following [Safeguarding Principles & Requirements](#) and [Risks & Capacities Guideline](#) assessed for the Project Area, taking into account likely issues in the context of the Project Region. The assessment outcome shall be submitted for Preliminary Review and updated as required for Design Certification and Performance Certification.
- 3.1.5 A minimum of 10% of the total Project Area shall be identified and used to protect or enhance the biological diversity⁶ following High Conservation Value (HCV)⁷ approach. The designated protected area shall be located within the Project Area and managed by the Project Developer. The protected area can include buffer zone areas for water bodies. To protect or enhance biological diversity, the following shall be identified and managed.
- (a) Existing patches of native tree species⁸, AND
 - (b) Single solitary stems of native tree species⁹, AND

⁶ The variability among living organisms from all sources including, inter alia, terrestrial, marine and other aquatic ecosystems and the ecological complexes of which they are a part; this includes diversity within species, between species and of ecosystems. Source: FSC

⁷ Refer to High Conservation Value Resource Network for definition of High Conservation Value Area. Available at <https://hcvnetwork.org/>

⁸ Native tree species (Source: FSC) Species, subspecies, or lower taxon, occurring within its natural range (past or present) and dispersal potential that is, within the range it occupies naturally or could occupy without direct or indirect introduction or care by humans.

⁹ Native tree species (Source: FSC) Species, subspecies, or lower taxon, occurring within its natural range (past or present) and dispersal potential that is, within the range it occupies naturally or could occupy without direct or indirect introduction or care by humans.

- (c) Habitats of rare, threatened and endangered species¹⁰, AND
 - (d) Areas relevant for habitat connectivity
- 3.1.6 The Project Developer shall maintain a buffer zone of 15 meters for water bodies on both sides of any permanent or temporary *water bodies* such as lakes, streams, rivers, wetlands, etc. Irrigation channels are excluded from this requirement. In these buffer zones:
- (a) All existing native trees shall be kept, AND
 - (b) No fertilizer and pesticides shall be used, AND
 - (c) No logging activities shall take place, AND
 - (d) No heavy machinery shall be used, AND
 - (e) No cropping is allowed, AND
 - (f) In case trees are being planted, these need to be native tree species.

PRINCIPLE 3 – STAKEHOLDER INCLUSIVITY

- 3.1.7 The Stakeholder Consultation shall be conducted prior to the project start date. The Project Developer shall refer to [Stakeholder Consultation Engagement Requirements](#) for further details.

PRINCIPLE 4 – DEMONSTRATION OF REAL OUTCOMES

- 3.1.8 All Projects shall undergo Preliminary Review, Project Design Certification and Performance certification as per the [Principles & Requirements](#).
- 3.1.9 **A/R specific:** The crediting period shall be a minimum of 30 years and maximum 50 years. The Project Developer shall select the crediting period based on the characteristics of the project.
- 3.1.10 **AGR specific:** The crediting period shall be a fixed 10-year period unless otherwise stated in applicable [Impact Quantification Methodology](#).
- 3.1.11 The crediting period starts either with the Project Start Date or three years prior to the date of Project Design Certification, whichever occurs later.
- 3.1.12 Verification & Issuance review (Performance Certification): The performance review may take place either alongside or after Project

¹⁰ All endangered and critically endangered species as defined by the IUCN Red List – www.IUCNredlist.org

Design Certification and must occur at least once during the 5-year Certification cycle.

- (a) **AGR specific:** The first Verification shall be completed either within two years of project start date or Project Design Certification, whichever is later.
- (b) **A/R specific:** Verification shall be completed at least every 5 years until the end of the crediting period.
- (c) According to the [Principles & Requirements](#), all projects shall seek Crediting Period Renewal every 5th year. At the time of project renewal, The A/R and AGR projects shall update the baseline following the applied [Impact Quantification Methodology](#) requirements.

PRINCIPLE 5 – FINANCIAL ADDITIONALITY & ONGOING FINANCIAL NEED

- 3.1.13 The project shall demonstrate additionality as per the [Principles & Requirements](#), or [GHG Emissions Reduction and Sequestration Product Requirements](#), as applicable.
- 3.1.14 The following requirements are applicable for the demonstration of prior consideration of revenues from Gold Standard certification for standalone projects:
 - (a) Regular cycle projects are exempt from any kind of prior consideration of carbon revenue checks.
 - (b) Retroactive cycle projects shall submit the required documents to Gold Standard within five years of its start date (time of first submission). Project submitted at a date later than five year from the project start date will not be eligible for Gold Standard certification.
- 3.1.15 For retroactive cycle projects, the Project Developer shall demonstrate that:
 - (a) the revenues from Gold Standard Certified SDG Impact Statements or Products, such as GSVERs, were seriously considered in the decision to implement the project, AND
 - (b) there was continuous interest in Certified Impact Statements or Products for the project in parallel with its implementation.

Evidence to support the prior consideration can include contracts, draft versions of project information, correspondence with financial institutions or other stakeholders, minutes and notes of meetings, agreements or negotiations with auditors, publications in newspapers.

3.1.16 The project shall apply one of the following options to demonstrate project additionality :

(a) Option 1 - CDM Tools

- i. **A/R project:** Shall apply the latest version of the A/R CDM '[Combined tool to identify the baseline scenario and demonstrate additionality in A/R CDM project activities](#)'. The CDM specific terms of the A/R CDM additionality tool (tCERs, A/R CDM project, etc.) shall be interpreted in the context of Gold Standard. The '[Guideline on the assessment of investment analysis](#)' and the '[Guidelines for objective demonstration and assessment of barriers](#)' can be used.
- ii. **AGR project:** Shall apply the latest version of CDM '[Guidelines for the establishment of sector specific standardized baselines](#)', or '[Combined tool to identify the baseline scenario and demonstrate additionality](#)'. The '[Guideline on the assessment of investment analysis](#)' and the '[Guidelines for objective demonstration and assessment of barriers](#)' can be used.

(b) Option 2 – Positive List

- i. **A/R Project:** Shall meet requirements (a), (b) and (c) in the list below and at least one of the requirements from (d) to (g) to apply option 2.
 - (a) The project is located in a Least Developed Country (LDCs) or in a region with a recent UNDP Human Development Indicator¹¹ below 0.8. AND
 - (b) The project shall have no intention of creating a forest for the commercial use of the timber or non-timber forest products. AND
 - (c) The project activities shall not be mandatory by any law or regulation, OR if it is mandatory, it shall demonstrate that these laws or regulations are systematically not enforced. AND
 - (d) The project is located in a region with a mean annual precipitation of less than 600 mm. OR
 - (e) The soil pH of the planting area is less than 4.0. OR

¹¹ UNDP Human Development Indicator: <http://hdr.undp.org/en/data/profiles/>

- (f) The planting area is planted with minimum 5 different native tree species in mixed stands, covering at a minimum 50% of the planting area. OR
- (g) The project area is located in a country or region with a recent UNDP Human Development Indicator¹² below 0.5, OR in a Small Island Developing State (SIDS)¹³
- ii. **AGR project:** Shall meet requirements (a) and (b) in the list below and at least one of the requirements from (c) to (f).
 - (a) The project area is located in a country or in a region with the latest UNDP Human Development Indicator¹⁴ below or equal to 0.7. AND
 - (b) The project activities shall not be mandatory by any law or regulation, OR if they are mandatory, the Project Developer shall demonstrate that these laws or regulations are systematically not enforced. AND
 - (c) The mean annual precipitation in the project area is less than 600 mm. OR
 - (d) In the project area a minimum of 5 native crop species are being cultivated in a locally adapted agroforestry system¹⁵. OR
 - (e) The project is a smallholder project and results in Gold Standard VERs of less than 60,000 tCO_{2eq} per annum. OR
 - (f) The project area is located in a country or region with a recent UNDP Human Development Indicator below 0.5, OR In a Small Island Developing State (SIDS).

(c) Option 3 – Activity Penetration (**AGR Project Specific**)

¹² UNDP Human Development Indicator: <http://hdr.undp.org/en/data/profiles/>

¹³ SIDS: <https://sustainabledevelopment.un.org/topics/sids/list>

¹⁴ UNDP Human Development Indicator: <http://hdr.undp.org/en/data/profiles/>

¹⁵ A locally adapted agroforestry system refers to land-use systems and practices where trees are deliberately integrated with crops and/or livestock on the same land management unit adapted to the local geophysical and social conditions.

- i. An AGR project can only use this option if the project is applying [GHG Emissions Reductions & Sequestration Product Requirements](#) and annual GHGs reductions are less than 60,000 tCO₂eq. The project is deemed additional when the project activity is adopted by less than 5% of farmers in the Reference Area¹⁶. The 'Number of farmers adopting the project activity' represents the farmers participating in the project.

3.1.17 A project may request retroactive issuance of Certified Impact Statements and / or Products. The maximum period for retroactive issuance is three years - which starts either with the Project Start Date or three years prior to the date of Project Design Certification, whichever occurs later.

4. TECHNICAL REQUIREMENTS

4.1.1. In addition to the Principles and Requirements, the Project Developer shall follow the process outlined below:

4.1.2. All projects shall provide the following information in the Key Project Information:

(a) **Preliminary review**

- General description and overview of project activities
- Organisations that are involved in the project (project participants)
- Communities stakeholders involved in the project, as applicable
- Risk of the project area to change (during the crediting period)
- Risk of the project activities to change (during the crediting period)
- Timeframe for the project activities
- Number of predicted CO₂-certificates or other Certified SDG Impacts sought
- Land-use history and current situation of the project area
- Socio-economic history and current situation
- Main social impacts (risks and benefits)
- Main environmental impacts (risks and benefits)
- Financial structure
- **A/R projects:** Location of the project area and the planting area, as applicable
- **A/R projects:** Size of the project area and the eligible planting area, as applicable
- **A/R projects:** Number of Modeling Units and size of each one
- **A/R projects:** Forest management applied (past and future)
- **A/R projects:** Forest characteristics (including main tree species planted)

¹⁶ Reference Area: an area with similar climatic and social conditions as defined by the Köppen-classification http://en.wikipedia.org/wiki/Köppen_climate_classification

- **AGR projects:** Shall also provide information on distribution of revenues (between the Project Developer and the smallholders), if applicable

4.1.3. All projects shall submit GIS vector layers (Table 4). The GIS vector layers shall be labelled comprehensively:

Table 1: Information as a GIS vector layer

ITEMS	A/R projects	AGR projects	Certification Stage
Project Region	Yes	Yes	Preliminary Review and Project Design certification
Project Area	Yes	Yes	
Eligible Areas	Yes	Yes	
Individual Modelling Units	Yes	Yes	
Infrastructure (road, houses, etc.)	Yes	Yes	Project Design certification
Water Bodies	Yes	Yes	
Protected Areas	Yes	Yes	
Biodiversity Areas	Yes	Yes	
Where Affected People are situated	Yes	Yes	
Sites with special cultural, ecological, economic, religious or spiritual significance	Yes	Yes	
Sites with special significance for <i>indigenous people and local communities</i> – resulting from the Local Stakeholder Consultation (LSC)	Yes	Yes	
Where <i>indigenous people and local communities</i> are situated	Yes	Yes	
Where <i>indigenous people and local communities</i> have legal rights, customary rights or sites with special cultural, ecological, economic, religious or spiritual significance.	Yes	Yes	

4.1.4. **AGR specific** requirements for Smallholder projects shall use the following guidance to provide above information;

- (b) Project region: A map with a polygon reflecting the boundaries
- (c) Project areas: A map with one GPS point per project participant and each project participant shall have a hand- drawn map of its part of the project area
- (d) Protected areas: A map with national parks (as by Google Maps) and UNESCO sites (as by <http://whc.unesco.org/en/interactive-map/>)
- (e) Biodiversity areas: A map with a polygon reflecting the boundaries
- (f) Infrastructure and permanent water bodies: As by Google Maps
- (g) Location of affected people: One GPS point per person, group of persons or community with a caption that describes the effect
- (h) Sites with special cultural, ecological, economic, religious or spiritual significance: One GPS point per site with a caption that describes the significance and effect

ANNEX A – UNCERTAINTY OF LUF PARAMETERS

Annex A presents guidelines for accounting Uncertainty associated with LUF projects. This guideline is applicable to all Gold Standard LUF projects in all countries.

- 1.1.1 Estimated greenhouse gas emissions and removals resulting from Land Use and Forestry (LUF) activities have uncertainties associated with the measurements/estimates of various parameters, especially area or other activity data, carbon stocks, biomass growth rates, expansion factors, emission factors and other coefficients.
- 1.1.2 This guideline provides a step-by-step approach on how to treat uncertainties in LUF projects and how to comply with the required target precision of 20% of the mean at a 90% confidence level.¹⁷
- 1.1.3 This guideline does not provide requirements for the estimation of uncertainties. Rather, it is assumed that the uncertainties associated with the various input data are known, either as estimates based on sound statistical sampling/measurement or published values, or default values given in [IPCC Guidelines \(2006\)](#), [IPCC GPG - LULUCF \(2003\)](#)
- 1.1.4 To accommodate that measurements are not always available to projects, and IPCC default factors following tier 1 approach do not meet Gold Standard requirements for project data and precision level, this guideline incorporates three approaches for baseline and project activity quantification:
 - (a) **Approach 1:** requires on-site measurements to directly document pre-project and project activity data.
 - (b) **Approach 2:** uses peer-reviewed publications to quantify baseline and project activity data. Project owners need to prove that the research results are conservative and applicable to the project site and management practice.
 - (c) **Approach 3:** applies default factors to quantify changes but a discounting factor (Uncertainty Deduction) must be applied if compliance with the uncertainty threshold of $\pm 20\%$ at a 90% confidence interval is not satisfied.
- 1.1.5 Generally, the most specific approach possible with the data available must be chosen. A decision tree to determine an eligible approach is supplied in Figure 1 below.

¹⁷ For parameters also applied in Gold Standard Energy such as fuel emission factors the Gold Standard precision of 10% of the mean at the 90% confidence level must be applied.

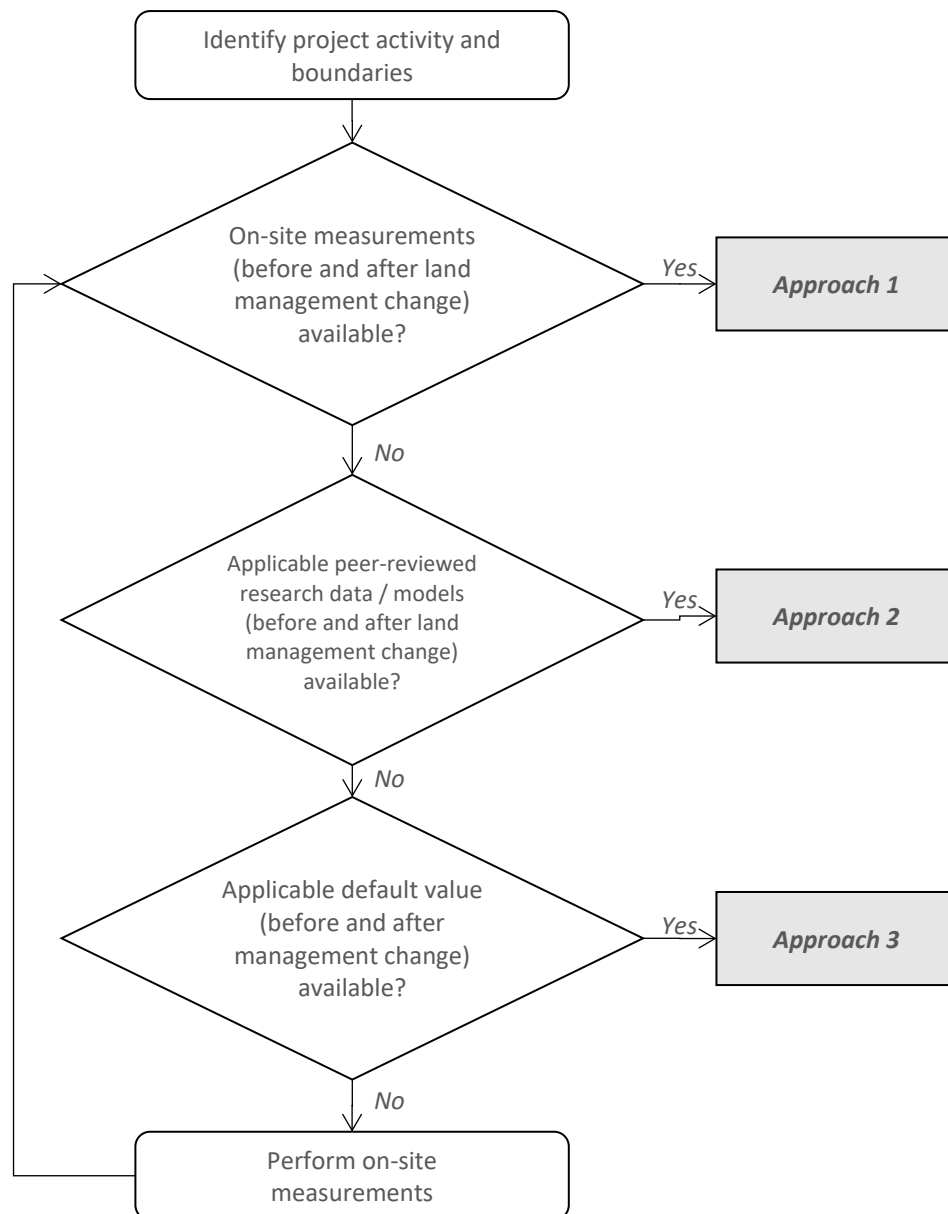


Figure 1: Decision tree for identification of appropriate approach

1.1.6 Under **Approach 1** data is measured within each stratum and shall follow accepted sampling and analysis protocols. The project owner shall use Special Guidance for Smallholder Projects Data. Data is measured within each stratum and shall follow accepted sampling and analysis protocols.

- (a) If the uncertainty of estimated value is less than or equal to 20% of the mean change value then the project owner may use the estimated value without any deduction for uncertainty, i.e. UD = 0.
- (b) If the uncertainty is greater than 20% of the mean value, then the project owner shall either increase the sampling effort to

achieve this target or the project owner shall use the estimated value subject to an Uncertainty Deduction (UD) in table 1 below (see approach 3).

1.1.7 Approach 2

- (a) Data is derived from peer reviewed published literature. Evidence for applicability of the literature values to the project site has to be provided with respect to climate factors (e.g. precipitation levels and seasonal distribution), soil and vegetation types as well as current and historic management systems (e.g. crops, tillage techniques, fertilization). Direct application of literature values is only permitted if the source conditions match the project environment, evidence of which shall be provided. Furthermore, literature values shall only be applied within the spatial and temporal dimensions analysed in the original source (e.g. SOC depth, timespan for which changes are documented). If a range of parameter values are given in a source or data is aggregated across various factor levels (e.g. average in a region, across a range of soil types), the most conservative value shall be used.
- (b) Alternatively, values from literature may be verified by comparing them to measurements in a set of sample sites within the respective project stratum to indicate conservativeness of the parameter values applied. Such measurements are required if evidence for applicability (as listed above) of literature values is deemed insufficient by an auditor.
- (c) The project owner shall use precision of 20% of the mean at the 90% confidence level as the criteria for reliability of estimates

1.1.8 Special Guidance for Smallholder Projects

- (a) Data is derived from peer reviewed published literature. Evidence for applicability of the literature values to the project site has to be provided with respect to climate factors (e.g. precipitation levels and seasonal distribution), soil and vegetation types as well as current and historic management systems (e.g. crops, tillage techniques, fertilization). Direct application of literature values is only permitted if the source conditions match the project environment, evidence of which shall be provided. Furthermore, literature values shall only be applied within the spatial and temporal dimensions analysed in the original source (e.g. SOC depth, timespan for which changes are documented). If a range of parameter values are given in a source or data is aggregated across various factor levels (e.g. average in a region, across a range of soil types), the most conservative value shall be used.
- (b) Alternatively, values from literature may be verified by comparing them to measurements in a set of sample sites within the respective project stratum to indicate conservativeness of the parameter values applied. Such measurements are required if

evidence for applicability (as listed above) of literature values is deemed insufficient by an auditor.

- (c) If the uncertainty of estimates is less than or equal to 20% of the mean change value then the project owner may use the estimated value without any deduction for uncertainty, i.e. $UD = 0$. If the uncertainty is greater than 20% of the mean value, then the project owner shall use the estimated value subject to an Uncertainty Deduction (UD) in table 1 below (see approach 3).

1.1.9 Approach 3

- (a) Project owners may use published default factors such as IPCCs. However, as IPCC default factors are often available on tier 1 level only and are thus too generic for project level with high resulting errors for an individual site (or product), Gold Standard provides a discounting approach for those default factors which do not meet the Gold Standard uncertainty threshold of $\pm 20\%$ at a 90% confidence interval.
- (b) If the uncertainty is less than or equal to 20% of the mean change value then the project owner may use the estimated value without any deduction for uncertainty, i.e. $UD = 0$. If the uncertainty is greater than 20% of the mean value, then the project owner shall use the estimated value subject to an Uncertainty Deduction (UD) in Table 1:

Table 2: Uncertainty discounting approach

Uncertainty [U]	Uncertainty Deduction [UD] (% of U)
$20 < U \leq 30\%$	50%
$30 < U \leq 40\%$	75%
$40 < U \leq 50\%$	100%

Example:

Estimated mean = 60 ± 30 kgCO₂e

Calculate Uncertainty $U = 30/60 = 50\%$

Resulting Uncertainty Deduction $UD = 100\% * 30 = 30$ kg CO₂e

- 1.1.10 The Uncertainty Deductions shall always be applied in the most conservative way, i.e. limiting the activities' GHG benefits to the lower end of the confidence interval.

Discounted conservative mean:

For stocks / GHG removals:

In baseline = $60 + 30 = 90$ kgCO₂eq

In project = $60 - 30 = 30$ kgCO₂eq

For GHG emissions:

In baseline = $60 - 30 = 30 \text{ kgCO}_2\text{eq}$

In project = $60 + 30 = 90 \text{ kgCO}_2\text{eq}$

ANNEX B – REQUIREMENTS FOR A/R SMALLHOLDER & MICROSCALE PROJECTS

1. SCOPE AND APPLICABILITY

- 1.1.1 Annex B presents simplified requirements for Smallholder and Microscale projects seeking Gold Standard certified statements and or products such as Gold Standard VERs. The following sections outline the requirements that are modified, simplified or waived for Smallholder and Microscale projects. If a particular requirement in the 'Land Use & Forest Activity Requirements' is not discussed here, it implies that the 'Land Use & Forest Activity Requirements' and/or Principles & Requirements shall be followed. If a project intends to apply the requirements of the 'Land Use & Forests Activity Requirements' instead of the adapted version outlined in this guideline, it may do so.
- 1.1.2 To avoid undermining the purpose of the simplified requirements, Project Developers are not allowed to register projects with similar characteristics as separate projects
- 1.1.3 These requirements shall be applied in combination with the Gold Standard 'Land Use & Forest Activity Requirements'.
- 1.1.4 Smallholder projects include project areas that are managed by smallholders and there is NO limit in size for such 'smallholder' projects. For projects that consist of areas managed by a mix of smallholders and non-smallholders ('smallholders' as defined in 'Definitions') can seek a combined certification. Though, these requirements can only be applied for the project areas that are managed by the smallholders.
- 1.1.5 Microscale projects are defined as projects with a project area of maximum 500ha.
- 1.1.6 When the Project Developer is uncertain about the interpretation of 'Land Use & Forest Activity Requirements' in the context of smallholder or microscale projects, the developer shall seek clarification from the Gold Standard Secretariat.

2. DEFINITIONS

- 2.1.1 Project Actors include workers that are employed by a written or verbal agreement. This includes permanent, migrant, part-time and seasonal employees, of all ranks and categories, including field workers, artisans, labourers, administrators, supervisors, executives, contractor employees as well as self-employed contractors and sub-contractors. (Source: adapted from Fairtrade and FSC). In the context of Smallholders and Microscale projects, workers include;
 - (a) workers employed by a verbal agreement on smallholder farms for less than 3 months per year, AND

- (b) smallholder farmers i.e., farmers that have more than 50% of farm work done by family members, cooperative members or neighbours. AND
 - (c) family members of the smallholder farmer
- 2.1.2 The Auditor refers to a Gold Standard accredited Validation and Verification body (VVB) or individual experts who have successfully completed the Gold Standard training for 'LUF Auditors' and are accredited and approved following Gold Standard Validation & Verification Body Requirements. Upon Gold Standard approval, the 'individual auditors' can be engaged to audit projects for New Area Certification and Performance Certification (except for the first Performance Certification) with following limitations
 - (a) The cumulative amount of GSVERs issued through one or several certifications executed by 'individual auditors' cannot exceed 100,000 GSVERs. For other SDG Impact Statements, the developer shall seek clarification from the Gold Standard Secretariat.
 - (b) Beyond this threshold a Performance Certification by a Gold Standard accredited VVB can reinstate a project's eligibility for subsequent cumulative 100,000 GSVERs – again issued through one or several certifications executed by 'individual auditors'.
- 2.1.3 In the context of Smallholder and microscale A/R projects, an adaptation of the crediting period after the Design Certification is possible, as long as it stays within the timeframe of 30-50 years. For the procedures, please contact the Gold Standard secretariat.

3. KEY PROJECT INFORMATION

- 3.1.1 The following additional information is required to support Key Project Information:
 - (a) Organisations involved in the project (including legal details of the Project Developer and its relationship to the local communities of the project)
 - (b) Target smallholder groups that will be invited to participate
 - (c) Distribution of revenues (between the Project Developer and the smallholders)
- 3.1.2 Smallholder projects shall use the following guidance to provide the information listed in Section 4:
 - (a) Project region: A map with a polygon reflecting the boundaries
 - (b) Project areas: A map with one GPS point per project participant and each project participant shall have a hand-drawn map of its part of the project area

- (c) The projects shall submit digital polygons of each Modeling Unit plot area as by Google Earth or other online tools or on-site GPS or Lidar measurements.
- (d) Protected areas: A map with national parks (as by Google Maps) and UNESCO sites (as by <http://whc.unesco.org/en/interactive-map/>)
- (e) Biodiversity areas: A map with a polygon reflecting the boundaries
- (f) Infrastructure and permanent water bodies: As by Google Maps
- (g) Location of affected people: One GPS point per person, group of persons or community with a caption^[1] that describes the effect
- (h) Sites with special cultural, ecological, economic, religious or spiritual significance: One GPS point per site with a caption that describes the significance and effect

3.1.3 At validation and verification, each smallholder participating in the project shall:

- (a) know during any field visit what area of his land is part of the project activity (project area), AND
- (b) have a hand-drawn (or digital) map of this area that contains the size of his land and/or the number of trees.

3.1.4 Safeguarding Principles & Requirements

- (a) Under the Principle 3 Community Health, Safety and Working Conditions, Working Conditions and the Occupational Health & Safety assessment can be limited to 'workers' of the project only.
- (b) Under Principle 9 Environment, Ecology and Land Use, the following requirements are not applicable for smallholder and microscale projects:
 - Through a smart mosaic of the planting areas, buffer zones and infrastructure habitat connectivity for flora and fauna should be enhanced.
 - A minimum of 10% of the total Project Area shall be identified and used to protect or enhance the biological diversity¹⁸ following High Conservation Value (HCV)¹⁹ approach shall be followed.

¹⁸ The variability among living organisms from all sources including, inter alia, terrestrial, marine and other aquatic ecosystems and the ecological complexes of which they are a part; this includes diversity within species, between species and of ecosystems. Source: FSC

¹⁹ Refer to High Conservation Value Resource Network for definition of High Conservation Value Area. Available at <https://hcvnetwork.org/>

- On both sides of permanent or temporary *water bodies* (lakes, streams, rivers, wetlands, etc.) riparian buffer zones of 15 meters shall be implemented on each site. In these riparian buffer zones:
 - only native tree species²⁰ may be planted, AND
 - *invasive species*²¹ shall be removed, AND
 - all existing vegetation shall be kept, AND
 - no timber harvesting activities shall take place, AND
 - no use of fertilizer or chemical pesticides.

(c) The project shall assess:

- Existing patches of trees or single solitary stems with a high degree of biological diversity⁹, AND
- Habitats of endangered species²² shall always be identified and managed to protect or enhance the biological diversity⁹.
- Workers shall transport, store, handle and apply chemical pesticides in a safe way.

3.1.5 AGR specific (applicable to smallholder projects) The AGR projects or project areas managed by smallholders are not required to demonstrate compliance with following [Safeguarding Principles Assessment](#):

- Principle 9.6 - Pesticides & Fertilisers
- Principle 9.10 High Conservation Value Areas and Critical Habitats: paragraph 1.1.33.b and point 1.1.33.b

4.0 LEGAL RIGHTS

4.1.1. The Project Developer shall sign an *agreement* with the Smallholders which confirms that the smallholder holds the 'GSVERs user rights' from

²⁰ Native tree species (Source: FSC) Species, subspecies, or lower taxon, occurring within its natural range (past or present) and dispersal potential that is, within the range it occupies naturally or could occupy without direct or indirect introduction or care by humans.

²¹ Invasive species (Source: FSC) Species that are rapidly expanding outside of their native range. Invasive species can alter ecological relationships among native species and can affect ecosystem function and human health.

²² All endangered and critically endangered species as defined by the IUCN Red List – www.IUCNredlist.org

the trees that are planted due to the project but has passed these rights on to the Project Developer, AND the smallholder holds all necessary rights to implement the project (e.g. planting permits, right to harvest). Such *agreements* shall include the:

- contact details of the smallholder, AND
- contact details of the land owner (if differing), AND
- length of lease contract (if applicable), AND
- a confirmation that the land tenure on which the trees are planted is uncontested, AND
- the liabilities and benefits for the smallholder.

4.1.2 All paragraphs within the *agreement* shall be explained and discussed with the smallholders. If helpful, the *agreement* should be translated to the local language and/or explained orally.

4.1.3 If a smallholder does not hold land rights, the person or legal entity that does meet those respective requirements shall endorse the participation of the smallholder in a written form

4.1.4 The Project Developer shall maintain the following information:

- names and contact details from the participating smallholders, AND
- the locations (GPS points) and area (ha) of their project areas, AND
- the end dates of the lease contracts and frequency of renewal (if applicable), AND
- the start and end dates of the smallholders participating in the project.

5. **Additionality**

5.1.1 The project can demonstrate additionally as per Section Principle 5 – Financial Additionality & Ongoing Financial Need of The 'Land Use & Forests Activity Requirements'.

6. **GHG EMISSIONS REDUCTION & SEQUESTRATION METHODOLOGY (A/R)**

6.1.1. Many projects take place in countries where little scientific information is available for trees species, biomass in general and other land use related activities. Therefore, following simplifications to Gold Standard

A/R GHG Emissions Reduction & Sequestration Methodologies can be applied.

- (a) The Project can apply existing national or international default values, wherever available for estimations of 'Baseline', 'Leakage' and 'CO₂-Fixation'
- (b) Baseline: Applicability conditions for each Baseline scenario shall be set.

ANNEX C – GUIDELINES TO CONDUCT A SPATIAL FOREST/NON-FOREST ASSESSMENT

- 1.1.1 The Annex C provides guidance:
- i. to develop a forest/non-forest assessment to determine eligible areas to issue GSVERs, AND;
 - ii. required information for project documentation:
- 1.1.2 Use the definition of “forest” according to the Land Use and Forests (LUF) Activity Requirements as a minimum mapping unit (MPU). Indicate which definition is used for the assessment and justify the reasons.
- 1.1.3 Report on the type of remote sensing data (e.g. satellite, radar, spatial resolution) and source/s of the data and any relevant support documentation that helps in the replication and accurate assessment of the spatial analysis.
- 1.1.4 Remote sensing scenes should be dated:
- i. at least 10 years before the start date of the project, AND;
 - ii. at project start date
- 1.1.5 The forest/non-forest assessment shall be conducted for the entire project area. It is not necessary to do a classification of a full remote sensing scene (e.g. a whole Landsat image), but a sub-set of a scene is acceptable if it provides the necessary training points to complete a forest/non-forest classification with the required accuracy.
- 1.1.6 The following information/data should be reported in the PDD:
- i. Type of sensor used, spatial resolution, path/row, date of the scenes used
 - ii. Description of the method and software used in the pre-processing and classification process
 - iii. Description of how issues with areas under clouds/shadows were dealt with:
 - In the case of scenes that date 10 years before the project start date, the Project Developer should conservatively consider all areas under shadows/clouds as not eligible
 - In the case of scenes at project start date, if the start date is more than 1 year before the start of Preliminary Review, then the Project Developer should conservatively consider all areas under shadows/clouds as not-eligible. In such cases, a Project Developer could prove eligibility by conducting a ground-

truthing exercise to verify the land-cover for areas under clouds/shadows. The Project Developer shall report on how the ground-truthing was conducted, and which areas were visited (only visited areas can be included in such analysis; sampling is not allowed)

- Clearly map all polygons covered by shadows/clouds and present a table with the areas of each polygon and the total area in hectares
 - Develop a combined mask for the areas under clouds/shadows in both scenes and apply it to the scenes proceeding to the classification
- iv. Include a map of the classified scenes (10 years before and at project start date) with the forest/non-forest classes before and after the application of the selected forest definition as MPU (resampling).
 - v. Classify the scenes with the original spatial resolution. Then, resample the classification products for each scene. The final non-eligible areas within the project area will be the cumulative forest areas from both classified scenes. Generate a shapefile of the eligible area.
 - vi. Include a description of how the accuracy assessment was conducted (e.g. how the assessment points were selected and how the confusion matrix was prepared and interpreted). The accuracy must be calculated and reported on class-by-class and for the overall classification. The accuracy assessment of the classification must be conducted using ground-truth data (surveys) or remote sensing imagery of higher resolution of that used for the classification. The minimum overall accuracy for each class should be 90%.
 - vii. Provide a shapefile with the points used for the accuracy assessment.
 - viii. A final table indicating the total area (in hectares) of the project area, modelling units (planting area), and the 10% set aside for the conservation area.

- 1.1.7 The use of already classified remote sensing products coming from official sources (national/government institutions) is allowed. If this data is used, then the Project Developer shall explain the type of remote sensing imagery used in that analysis, the method, and the accuracy as reported by the original source.

- 1.1.8 When using publicly-available remote sensing products that show tree cover instead of forest cover (i.e. Global Forest Watch), then a Project Developer should prove that the selected tree cover percentage is representative of the DNA or national host or FAO forest definition, as necessary.

ANNEX D – LUF INPUT & GRIEVANCE MECHANISM

1. PURPOSE

- To maintain a transparent communication channel with stakeholders throughout the crediting period of a project, in addition to the consultation conducted at the design stage (via two rounds of Stakeholder Consultation).
- To address early in the crediting period, unforeseen issues that arise during the course of a project. Stakeholders can suggest improvements or modifications based on their direct experience with the project and their knowledge and understanding of local conditions.
- To further increase the robustness of The Gold Standard through more active and continuous stakeholder involvement, thereby adding value to the existing system of stakeholder feedback and monitoring.
- To increase mutual trust between the project developer and the local stakeholders, to the benefit of both parties.

2. REQUIREMENTS

The project developer shall establish methods a-c (below) of *input & grievance* expression for each project. Method d (below) is optional and may be chosen in agreement with local stakeholders (as part of the SC meeting). The project developer shall also demonstrate that they regularly monitor and respond to the comments that are made through each of the methods for continuous *input & grievance* expression.

Methods for continuous *input & grievance* expression

- (a) Continuous 'Input & Grievance Expression Process Book'
- (b) Telephone access
- (c) Internet and email access
- (d) Nominated Independent Mediator (NIM)

Comments received through any of the methods shall be documented using the table template below. This table is part of the 'Annual Reports' and thus part of every third-party audit and Gold Standard review.

Method 1 – Input & Grievance Expression Process Book

A comment book shall be made available on the project site or in the most appropriate, publicly accessible location (e.g. a local community centre, at the local council, a local library or school), so that local stakeholders can provide feedback on the project.

The book is important to allow for continuous inputs in regions with high literacy rates but which have minimal access to the internet. The location of the book

shall be explained and discussed at the SC meeting and then justified in the project documentation.

At a minimum, the book shall be formatted to include the five sections from the Table D-1 template. If the project developer feels that additional columns are necessary then these can be included. The table shall be formatted to allow for stakeholders to make anonymous comments should they wish.

The project developer shall check the comments in the book on a regular basis and record responses. The project developer may record changes that are made to the project, acknowledge problems and explain their causes, or explain why the comment cannot be addressed by the project, or if it is irrelevant. Even where the desired outcome of the stakeholder cannot be achieved, the project developer shall use their response to show that they are respectful of the views of stakeholders and suggest alternative solutions or compromises wherever possible.

Table D-1: Template table for recording input & grievance expressions

Date	Comment	Action requested from Project Developer	Response from project developer	Person designated with responsibility by project developer	Issue resolved?
	Explanation of problem or comment.	What would the stakeholder like to see change/stay the same.	Explanation from the project of what they will do in response to the comment. This may be an explanation as to why the project is unable to respond/does not see the problem as necessary to address.	Identification of who will take responsibility for responding AND monitoring the issue.	This could be confirmation from the person who made the complaint, or the project.

Table D-2: Pros and cons of Method 1

Pros	Cons
------	------

<ul style="list-style-type: none"> ○ Simple to use – does not require access to technology or associated costs for stakeholders ○ Cheap, efficient to manage ○ Simple to explain to stakeholders 	<ul style="list-style-type: none"> ○ Assumes literacy (they are still able to communicate through other input mechanisms) ○ Requires small geographical spread of stakeholders (or possibly more than one book) ○ Potential loss/theft of the book (ensure that a secure place is chosen and daily checks are carried out) ○ Could result in complaints from individuals, but little space for constructive discussions with wider community (encourage discussing these complaints in the local governance meetings)
---	---

Method 2 – Telephone access

In regions where stakeholders may be spread over a large geographical area, telephone contact may be more practical than a physical book. The telephone contact details shall be explained and discussed at the SC meeting and then justified in the project documentation.

The telephone number could be that of the project site office or another location. However, in countries where local or national calls, or calls to mobiles, have different pricing, the project developer shall try to offer the least expensive option and justify the choice. The contact details of The *Gold Standard Regional Manager* located closest to the project shall also be provided for stakeholders.

The project developer shall ensure that the phone is answered by someone (or has an answer phone message) in a language(s) appropriate to the stakeholders of the project.

Calls received shall be logged and recorded in the same way as in the book, with the date, comment, action requested and project developer response recorded for each call. As with all of the methods, stakeholders are not required to give their personal details when they wish to make a comment.

Table D-3: Pros and cons of Method 2

Pros	Cons
<ul style="list-style-type: none"> ○ Simple to use ○ Simple to explain to stakeholders ○ Inexpensive to run if the project developer uses the same phone line as the project/office rather than setting up a separate phone line 	<ul style="list-style-type: none"> ○ Stakeholder incurs the cost of a phone call ○ Provides fewer channels for discussion with wider community as complaints are individualized (encourage discussions on these

- | | |
|--|--|
| <ul style="list-style-type: none"> ○ Greater anonymity for stakeholders ○ Overcomes illiteracy issues ○ Better where stakeholders may be spread over a larger area or have geographical barriers to access the project site/book/mediator | also in the local governance meetings) |
|--|--|

Method 3 – Internet access

In regions with widespread internet access an email address or comments section on a website established by the project developer could be the easiest way of receiving input from stakeholders. The email and website details shall be explained and discussed at the SC meeting and then justified in the project documentation.

The email address of The *Gold Standard Regional Manager* located closest to the project shall also be provided for stakeholders to contact. On a website, the information of the project and mechanism for providing comments shall be presented in a straightforward manner, showing the same information as in the Table D-1 template. The information shall be in the language(s) most appropriate for local stakeholders and it shall allow for comments to be made anonymously.

Emails or website comments received shall be logged and recorded in the same way as in the book, with the date, comment, action requested and project response recorded for each message. As with all of the methods, stakeholders are not required to give their personal details when they wish to make a comment.

Table D-4: Pros and cons of Method 3

Pros	Cons
<ul style="list-style-type: none"> ○ Simple to use ○ Simple to explain to stakeholders ○ Useful where stakeholders are be spread over a larger area or have geographical barriers to access the project site/book/mediator ○ Managing an email address or website section for comments is inexpensive for project developer. 	<ul style="list-style-type: none"> ○ Assumes literacy ○ Assumes internet connection, and access to the internet for all groups of stakeholders ○ May entail some costs for the project developer to set up, of a website is used ○ Provides fewer channels for discussion with wider community as complaints are individualised (discuss in the local governance meetings) ○ Potential lower level of anonymity than telephone calls/comment book.

Method 4 – Nominated Independent Mediator (Optional)

The selection of a Nominated Independent Mediator (NIM) by the project developer may be the best approach for projects in regions with low literacy rates and/or little access to telephone and internet connections. The NIM shall be someone that local stakeholders can access easily, trust to represent their views, and who is in contact with the project developer. The selected NIM shall be discussed at the SC meeting and agreed by and with the local stakeholders. Contacts between the NIM and the local stakeholders shall be communicated to, and recorded by, the project developer using Table D-5. This shall include the date of contact, all of the issues that have been discussed and any information or responses that were provided to the NIM in response to the stakeholders. The NIM shall be willing to be contacted by the auditor or The Gold Standard Secretariat to confirm their role and the comments they have received.

Table D-5: Pros and cons of Method 4

Pros	Cons
<ul style="list-style-type: none"> ○ Simple to explain to stakeholders ○ ○ Can work within (and uphold) local customs for managing disputes ○ Potentially provides a third party to mediate relationships ○ Overcomes literacy issues ○ Potentially allows for community engagement and discussion of issues 	<ul style="list-style-type: none"> ○ The mediator may be biased towards/against the project and not give objective feedback (can be discussed in the local governance meetings and a request can be made to change the mediator if they are found to be prejudiced) ○ May not be approachable for stakeholders, or not to all groups (as above can be resolved in local governance meetings) ○ May require remuneration to take the role seriously

Table D-6: Table template for communications between NIM and stakeholders

Date	Comment	Action requested from Project Developer	Response from project developer	Person designated with responsibility by project developer	Issue resolved?
2 April 2013	The construction vehicles that drive to the site make lots of noise, and beep their horns	Please make less noise on the roads around the site and at the site entrance, as there are	Drivers have been asked to be respectful of the neighbours as they drive near the site, and turn off their engines	Mr. Kajura, Head of Site Transport	Internal monitoring suggests that drivers now call instead of using their horns to gain entry to the site. Mr Kajura

	to access the site.	houses nearby.	when they are waiting to enter. They have also been asked to telephone the site office to gain entry to the site, instead of beeping their horns. May 2013.		has spoken to project neighbours, and they agree that noise levels from the site have reduced. June 2013.
3 April 2013	There is now less land to graze our cattle because the area around the turbines has a fence.	Access to more land for grazing the animals.	For safety reasons, some areas have to be restricted so that there are no accidents. However, we will hold a meeting with local people to explain which areas are dangerous and therefore restricted, but use a map and discuss with local people to see if there are other areas of the site that can be used for grazing animals. May 2013.	Ms. Mandela, Site Manager.	Project community meeting held 30th May 2013. Map produced and copies distributed to local people to indicate which areas are accessible. Explained the dangers of high voltages for the animals to show why access to some land had been restricted. Community members agreed, but have asked for an animal passage to be made to access the western area of the

					site. This will be done with new fencing in August 2013.
--	--	--	--	--	--

3. Stakeholder Consultation (SC) Meeting

At the SC meeting, the methods of input shall be explained and discussed to ensure that local stakeholders agree that the details of the selected methods will be the most appropriate e.g. the location of the book is accessible and secure, local stakeholders agree that the mediator is someone that they can approach and trust to represent their comments to the project without prejudice, the website is in appropriate language(s) and will be easy for local stakeholders to use etc.

The *SC Report* shall document any comments, criticisms or improvements that were made to the continuous *input & grievance* expression methods discussed at the SC meeting.

Recommended Best Practice for Continuous Input & Grievance Expression from Stakeholders (local governance meetings)

The Gold Standard recommends that, where practical, project developers have regular meetings to invite local stakeholders to give their feedback on the project, ensure that the project goals are understood and investigate if there are any improvements that could be made. These could be in the form of:

Annual project open days to allow local stakeholders to visit the site and see the project

A meeting (e.g. coincide with training and repairs, or at the same time as auditor *field visits*) that includes general information about the project, education about climate change and carbon offsetting, etc.

These regular meetings can be very useful for projects as they allow project developers to hear the views of local stakeholders (including employees) and, as they allow for greater communication and understanding, can improve relations between the project and the local community. If regular meetings are planned, they shall be mentioned at both rounds of the LSC and advertised in accordance with The Gold Standard requirements.

As part of the Validation, the VVB shall check whether the approved/selected methods of continuous *input & grievance* from the *SC Report* or other consultations have been implemented on site and discussed in the project documentation.

The continuous input & grievance log (the template table in Section 2.0) is part of the project documentation that the auditor shall use to audit the project. The [GSVVB](#) shall check:

- (a) That the project developer has responded in a reasonable manner to comments that have been raised.
- (b) That the responses are adequate, timely and appropriate to address the problem or comments raised.
- (c) That any issues the auditor considers serious are taken up as a Forward Action Request (FAR) for the ^[1]_{SEP} project as part of the certification to ensure further monitoring of the issue.

The auditor shall make use of the comments when in discussions with local stakeholders as part of the *field visits*. The comments can provide useful starting points for conversations with the local stakeholders. If there are comments from a stakeholder that has chosen not to remain anonymous, the auditor can request to speak to this individual if they think an issue is of serious concern for the project.

Where the auditor has doubts about the activities of the project, or the comments raised relate to a serious problem, the auditor shall:

- (a) Confirm that the actions, as per the response from the project developer, recorded in the table have taken place.
- (b) Confirm that stakeholders accept the results.
- (c) Consider using a Forward Action Request (FAR) to ensure further monitoring of the issue.

If no comments have been made through the *input & grievance* mechanisms, the auditor shall record this information as part of their report. When engaging with local stakeholders they shall inquire whether stakeholders are aware of the continuous *input & grievance* mechanisms, whether there are any problems, concerns or comments about the project, and encourage the stakeholders and the project developer to use the continuous *input & grievance* mechanisms.